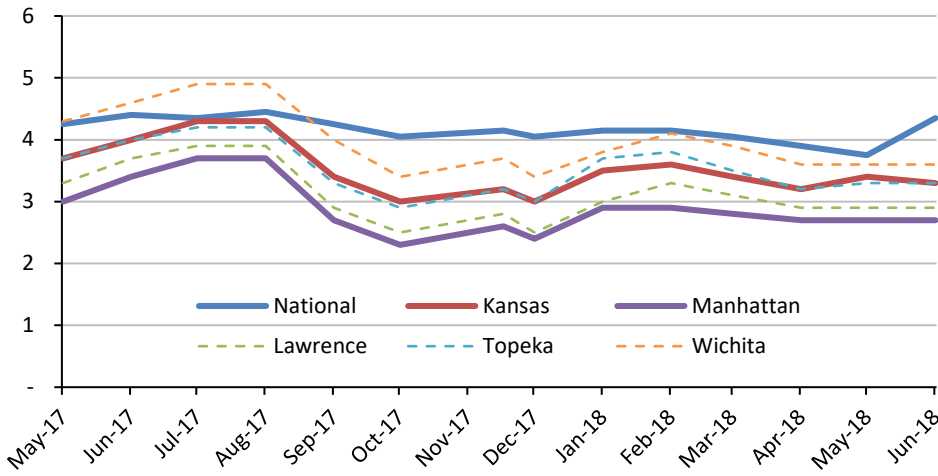


City of Manhattan Economic Snapshot

June 2018

Community Position

Unemployment Rate

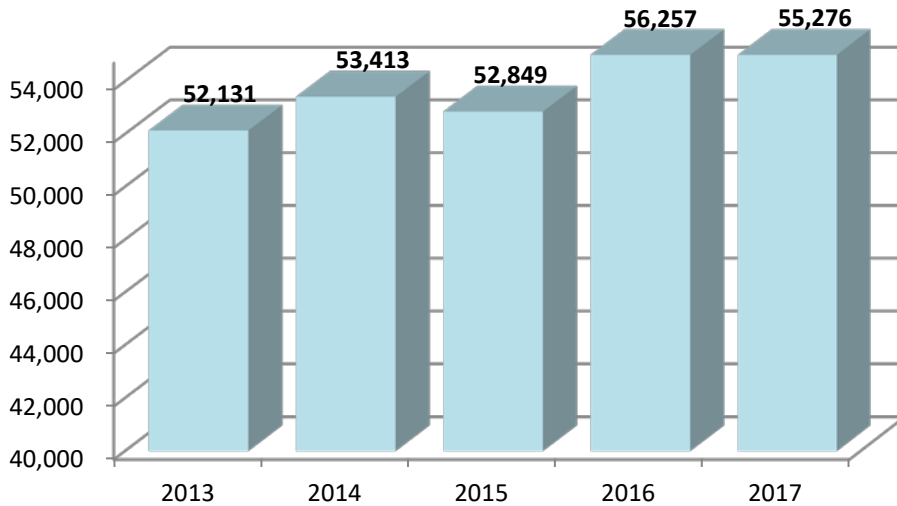


Unemployment rates listed for Manhattan, Lawrence, Topeka, and Wichita are a measure of the entire Metropolitan Statistical Area.

Source: United States Department of Labor: www.bls.gov
 Kansas Department of Labor: www.klic.dol.ks.gov

Consumer Price Index (CPI), the most commonly used measure of inflation, is the average change over time in the prices paid by urban consumers for goods and services. For a detailed report of the Midwest Region, please [click here](#).

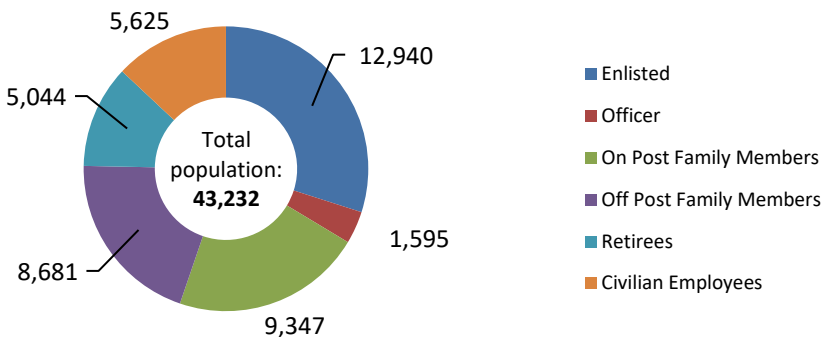
Growth Indicators - Vehicle Registrations



It should be noted that non-Kansas military personnel have the option of registering in the county they reside in or in their home state of record.

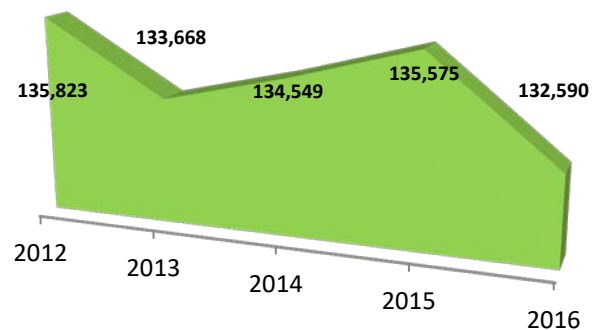
Source: Riley County Treasurer's Office

Fort Riley Military Population



Combined Statistical Area Population

Comprised of Geary, Riley, and Pottawatomie County



Data is for the October 1, 2016 through September 30, 2017 fiscal year

Source: Fort Riley Economic Impact Summary; Fiscal year October 1, 2016- September 30, 2017

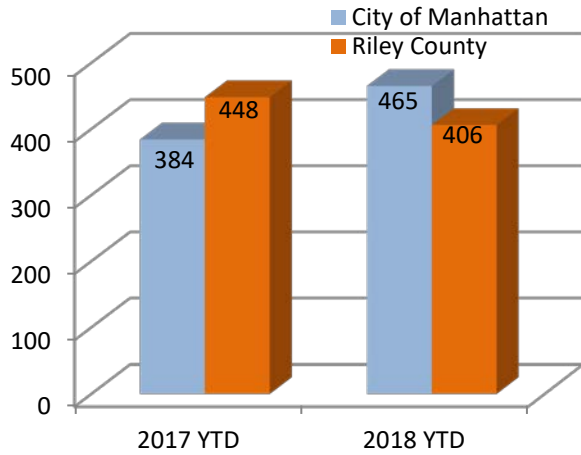
<http://www.riley.army.mil/Portals/0/Docs/Units/Garrison/PAIO/FY17EIS.pdf>

Source: U.S. Census Bureau - Population Estimates by Statistical Area

<http://factfinder2.census.gov/main.html>

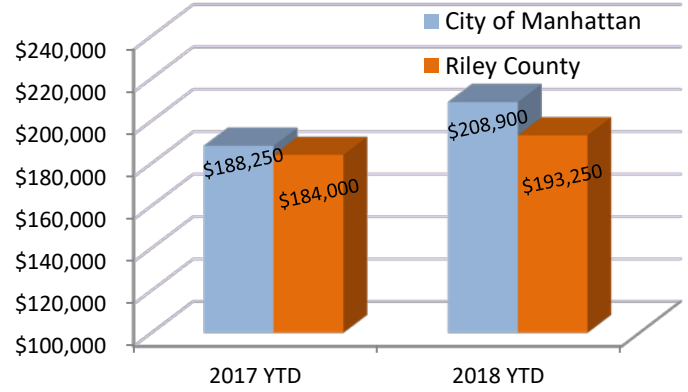
Housing & Retail

Sold Listings



Source: Manhattan Association of Realtors
 This information is based upon the Multiple Listing Service and does not include homes that are listed and sold by owner.

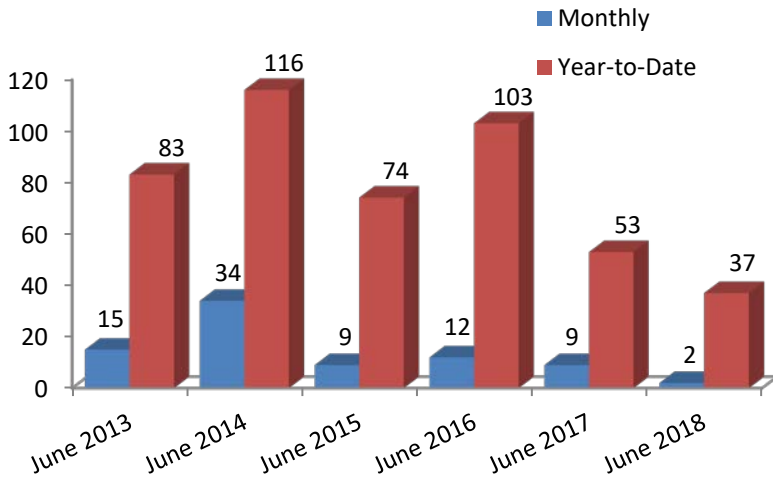
Median Sales Price



Midwest Median Sales Price, April 2018: \$202,100

Source: Manhattan Association of Realtors
 National Association of Realtors
<http://www.realtor.org/research/research/ehsdata>

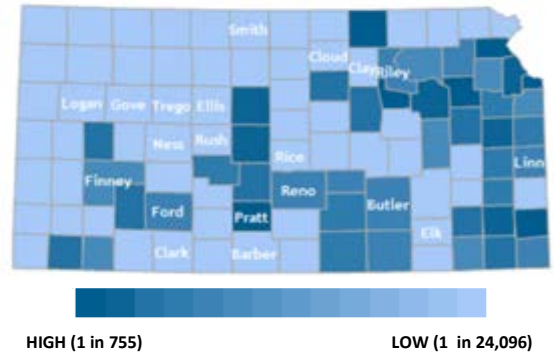
Building Permits - Residential Housing Units



These are the total number of new Residential units which include single family, two family, and multi family homes.

Source: City of Manhattan Code Services Department

Foreclosure Filings



Riley County Foreclosures:

2014	57
2015	49
2016	46
2017	45

There are three basic levels to foreclosures:

Level 1 ~ resolved by the lender and borrower

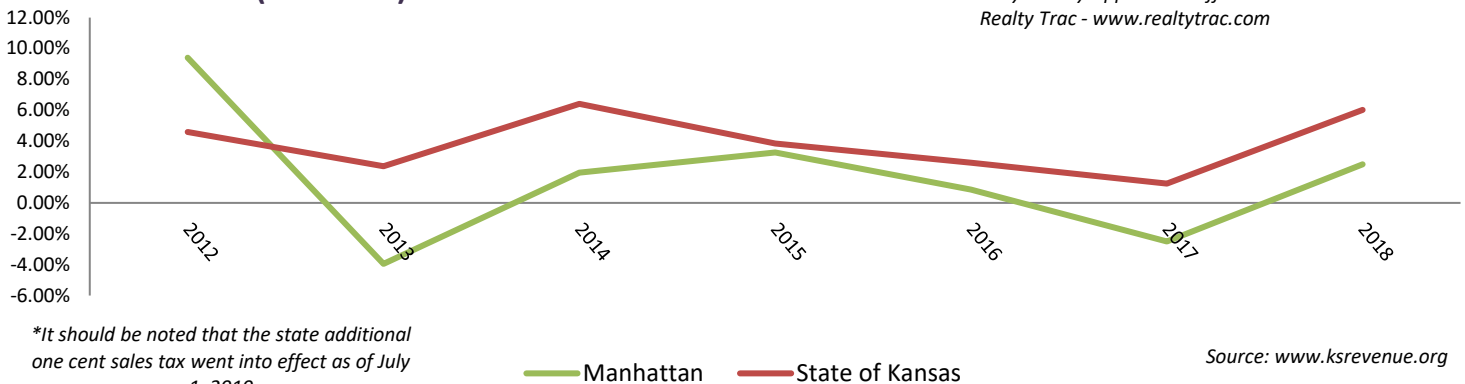
Level 2 ~ property sold as a "short sale"

Level 3 ~ property set up for auction

The outcome of each specific filing in Riley County is unknown.

Source: Riley County Appraiser's Office
 Realty Trac - www.realtytrac.com

Sales Tax Increase (Decrease) Over Previous Year-to-Date



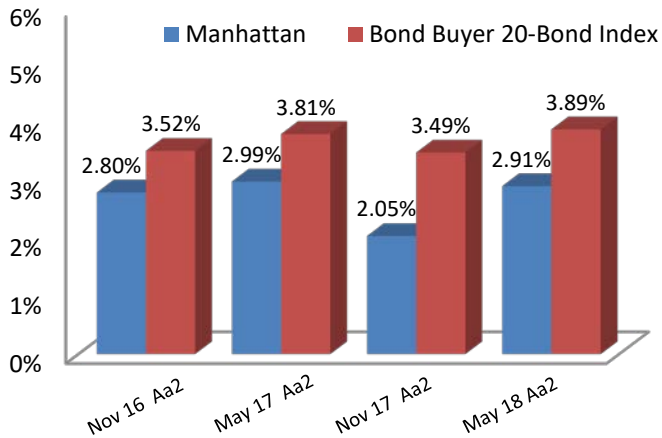
*It should be noted that the state additional one cent sales tax went into effect as of July 1, 2010

Source: www.ksrevenue.org

[Please visit our website for more detailed monthly sales tax information.](#)

Financial Outlook

Current and Historical Bond Ratings & Interest Rates



Source: City of Manhattan Bond Sale Records
www.munibondadvisor.com/rating.htm

Moody's Bond Rating

Ratings are assessed on the following factors: economy, debt structure, financial condition, demographics, and management practices of the governing body and administration.

"Aaa" - Best Quality

"Aa" - High Quality by all standards;

"A" - Upper medium grade

"Baa" - Medium grade obligations; they are neither highly protected nor poorly secured.

Bonds in the Aa, A, and Baa are also assigned a "1", "2", or "3" based on strength. "1" as the strongest and "3" as the weakest. Please visit the link below to view the City of Manhattan bond rating reports.

[Bond Rating Reports](#)

Manhattan in the news...

[Forbes: Best Small Places for Business and Careers](#)

[Business Insider: The 10 Most Exciting Small Cities in America](#)

[Future NBAF Information](#)

[Kansas First News: Manhattan Economy Feeding Neighboring Counties](#)

[Livability: Number One College Town in America](#)

[AIER: Top Ten College Towns in America](#)

Other Sources of Additional Statistics:

<http://www.city-data.com/city/Manhattan-Kansas.html>



Information Is Distributed by the City of Manhattan
For further information, please contact:

City Of Manhattan
City Manager's Office
1101 Poyntz Avenue
Manhattan, Kansas 66502
785-587-2404
www.cityofmnhk.com

