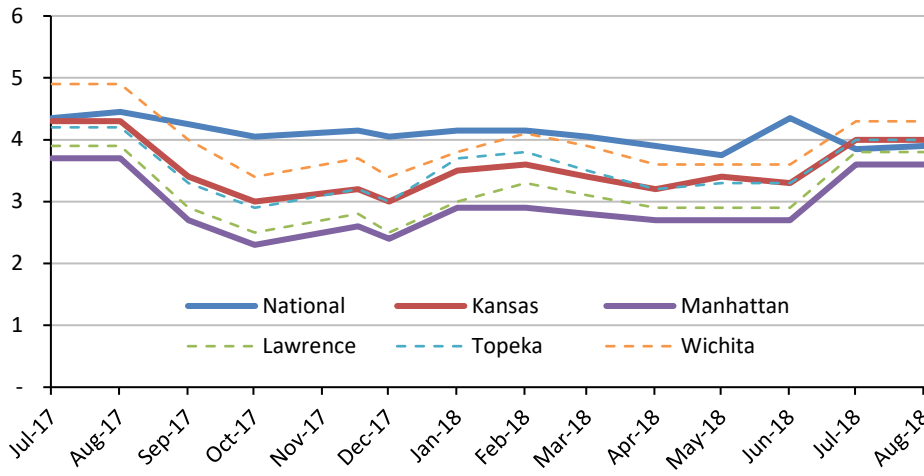


# City of Manhattan Economic Snapshot

August 2018

## Community Position

### Unemployment Rate

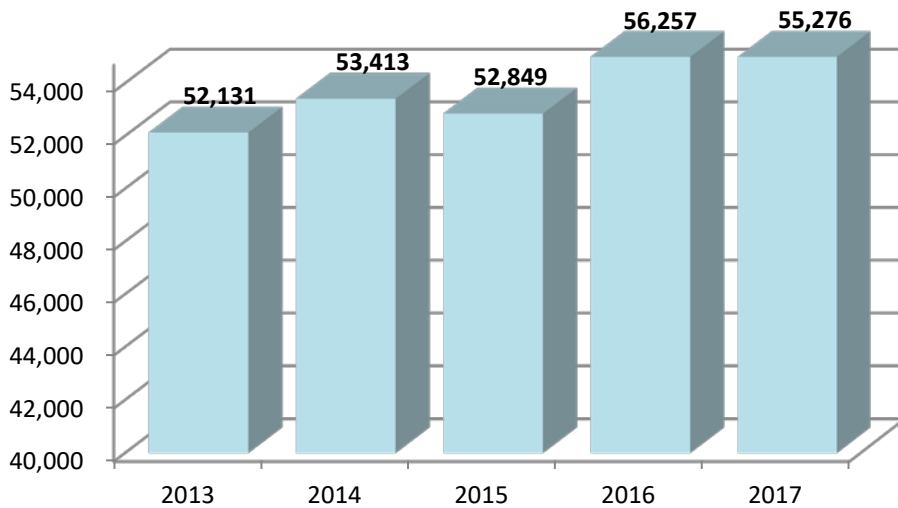


Unemployment rates listed for Manhattan, Lawrence, Topeka, and Wichita are a measure of the entire Metropolitan Statistical Area.

Source: United States Department of Labor: [www.bls.gov](http://www.bls.gov)  
 Kansas Department of Labor: [www.klic.dol.ks.gov](http://www.klic.dol.ks.gov)

Consumer Price Index (CPI), the most commonly used measure of inflation, is the average change over time in the prices paid by urban consumers for goods and services. For a detailed report of the Midwest Region, please [click here](#).

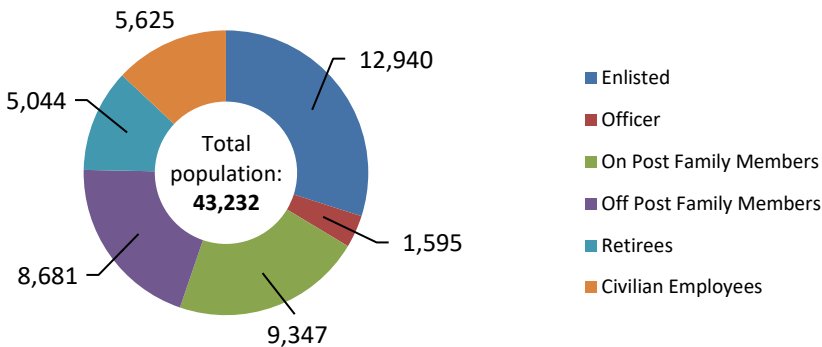
### Growth Indicators - Vehicle Registrations



It should be noted that non-Kansas military personnel have the option of registering in the county they reside in or in their home state of record.

Source: Riley County Treasurer's Office

### Fort Riley Military Population

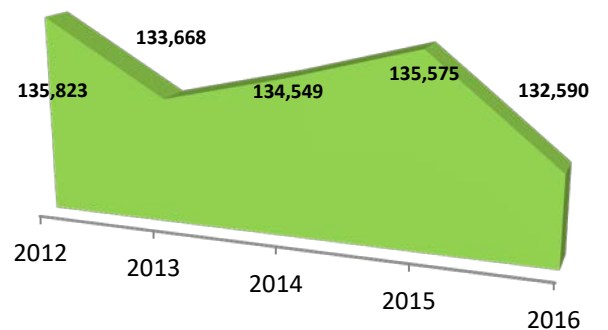


Data is for the October 1, 2016 through September 30, 2017 fiscal year

Source: Fort Riley Economic Impact Summary; Fiscal year October 1, 2016- September 30, 2017  
<http://www.riley.army.mil/Portals/0/Docs/Units/Garrison/PAIO/FY17EIS.pdf>

### Combined Statistical Area Population

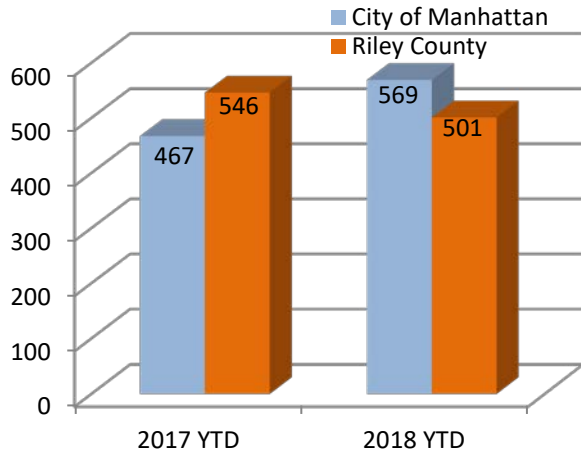
Comprised of Geary, Riley, and Pottawatomie County



Source: U.S. Census Bureau - Population Estimates by Statistical Area  
<http://factfinder2.census.gov/main.html>

# Housing & Retail

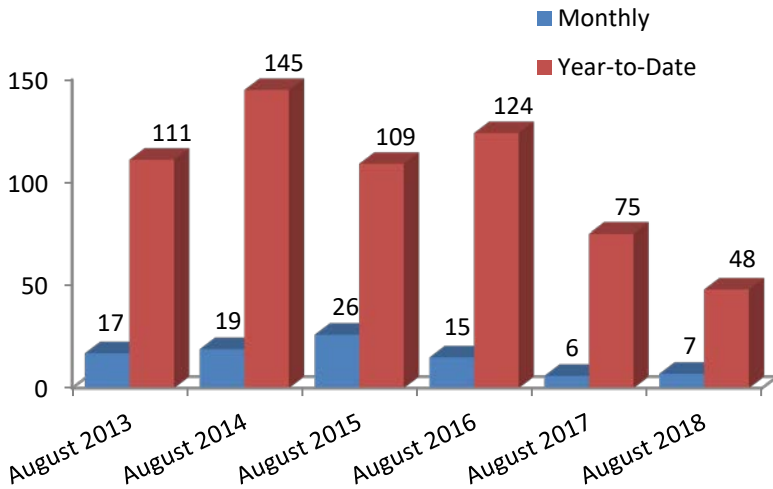
## Sold Listings



Source: Manhattan Association of Realtors

**NOTE:** Information has been updated as of July 31, 2018. Due to a merger between Manhattan Association of Realtors and Tall Grass Association of Realtors to form the Flint Hills Association of Realtors, new statistics will not be available until October.

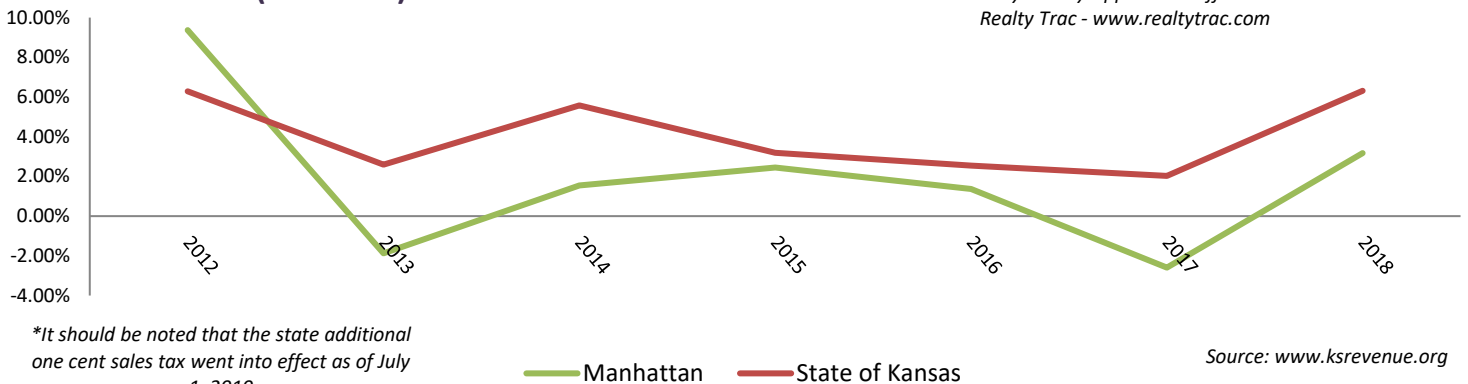
## Building Permits - Residential Housing Units



These are the total number of new Residential units which include single family, two family, and multi family homes.

Source: City of Manhattan Code Services Department

## Sales Tax Increase (Decrease) Over Previous Year-to-Date

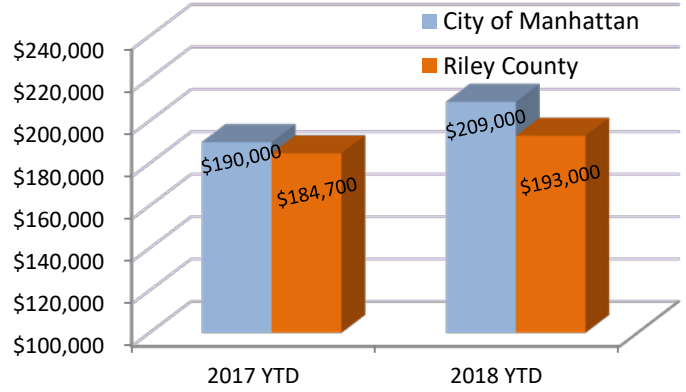


\*It should be noted that the state additional one cent sales tax went into effect as of July 1, 2010

Source: Riley County Appraiser's Office  
Realty Trac - [www.realtytrac.com](http://www.realtytrac.com)

Source: [www.ksrevenue.org](http://www.ksrevenue.org)

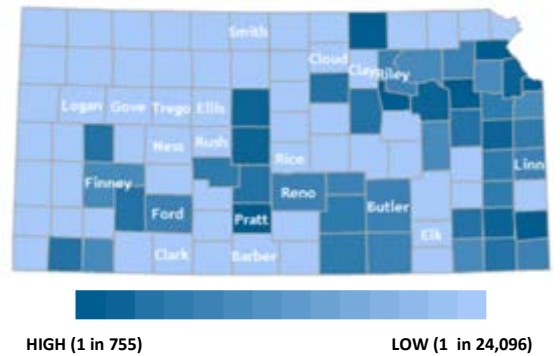
## Median Sales Price



## Midwest Median Sales Price, April 2018: \$202,100

Source: Manhattan Association of Realtors  
National Association of Realtors  
<http://www.realtor.org/research/research/ehsdata>

## Foreclosure Filings



### Riley County Foreclosures:

2014	57
2015	49
2016	46
2017	45

There are three basic levels to foreclosures:

**Level 1** ~ resolved by the lender and borrower

**Level 2** ~ property sold as a "short sale"

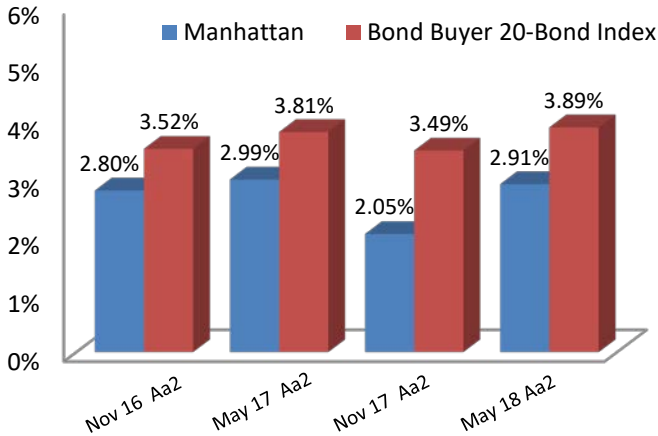
**Level 3** ~ property set up for auction

The outcome of each specific filing in Riley County is unknown.

[Please visit our website for more detailed monthly sales tax information.](#)

# Financial Outlook

## Current and Historical Bond Ratings & Interest Rates



Source: City of Manhattan Bond Sale Records  
[www.munibondadvisor.com/rating.htm](http://www.munibondadvisor.com/rating.htm)

## Moody's Bond Rating

Ratings are assessed on the following factors: economy, debt structure, financial condition, demographics, and management practices of the governing body and administration.

"Aaa" - Best Quality

"Aa" - High Quality by all standards;

"A" - Upper medium grade

"Baa" - Medium grade obligations; they are neither highly protected nor poorly secured.

Bonds in the Aa, A, and Baa are also assigned a "1", "2", or "3" based on strength. "1" as the strongest and "3" as the weakest. Please visit the link below to view the City of Manhattan bond rating reports.

[Bond Rating Reports](#)

## Manhattan in the news...

[Forbes: Best Small Places for Business and Careers](#)

[Business Insider: The 10 Most Exciting Small Cities in America](#)

[Future NBAF Information](#)

[Kansas First News: Manhattan Economy Feeding Neighboring Counties](#)

[Livability: Number One College Town in America](#)

[AIER: Top Ten College Towns in America](#)

## Other Sources of Additional Statistics:

<http://www.city-data.com/city/Manhattan-Kansas.html>



Information Is Distributed by the City of Manhattan  
For further information, please contact:

City Of Manhattan  
City Manager's Office  
1101 Poyntz Avenue  
Manhattan, Kansas 66502  
785-587-2404  
[www.cityofmnhk.com](http://www.cityofmnhk.com)