

City of Manhattan, Kansas

List of Principal Officials

Elected Officials

Mayor

City Commissioner
City Commissioner
City Commissioner
City Commissioner

John Matta

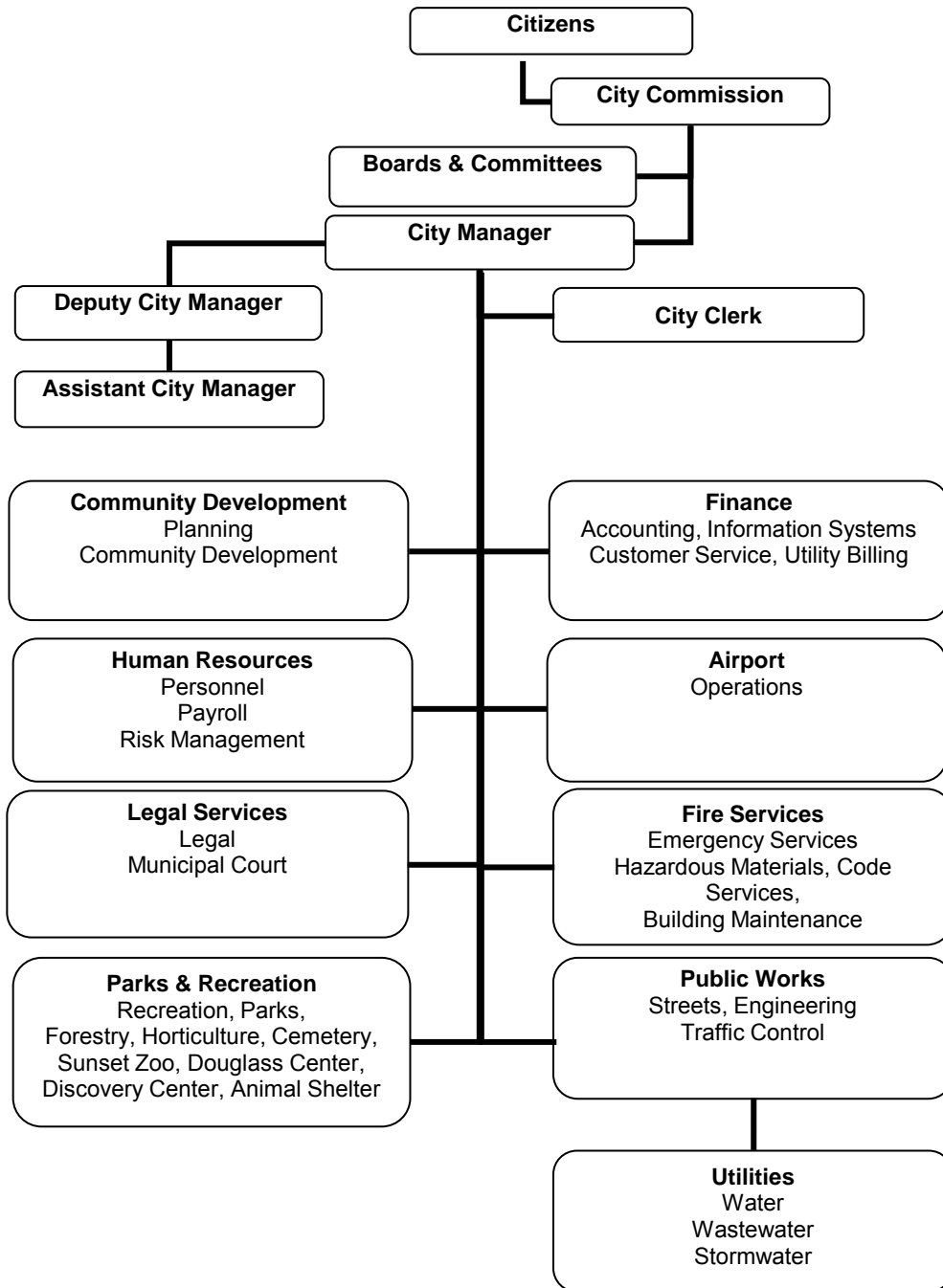
Wynn Butler
Karen McCulloh
Usha Reddi
Rich Jankovich

Appointed Officials

City Manager
Deputy City Manager
Assistant City Manager
City Clerk/Communications Manager
City Attorney
Airport Director
Director of Community Development
Director of Finance
Director of Fire Services
Director of Human Resources
Director of Parks and Recreation
Director of Public Works / Utilities

Ron R. Fehr
Jason Hilgers
Adam Bentley
Gary Fees
Bill Raymond
Peter VanKuren
Karen Davis
Bernie Hayen
Scott French
Cathy Harmes
Edward Eastes
Dale Houdeshell

City of Manhattan, Kansas Organizational Structure



There is a county-wide police department which was created by state statute in 1971. The Law Board sets policy for the Riley County Police Department. The City contributes 80% of the Law Board's budget. This expenditure is made from the Riley County Police Department Fund (Special Revenue Fund).