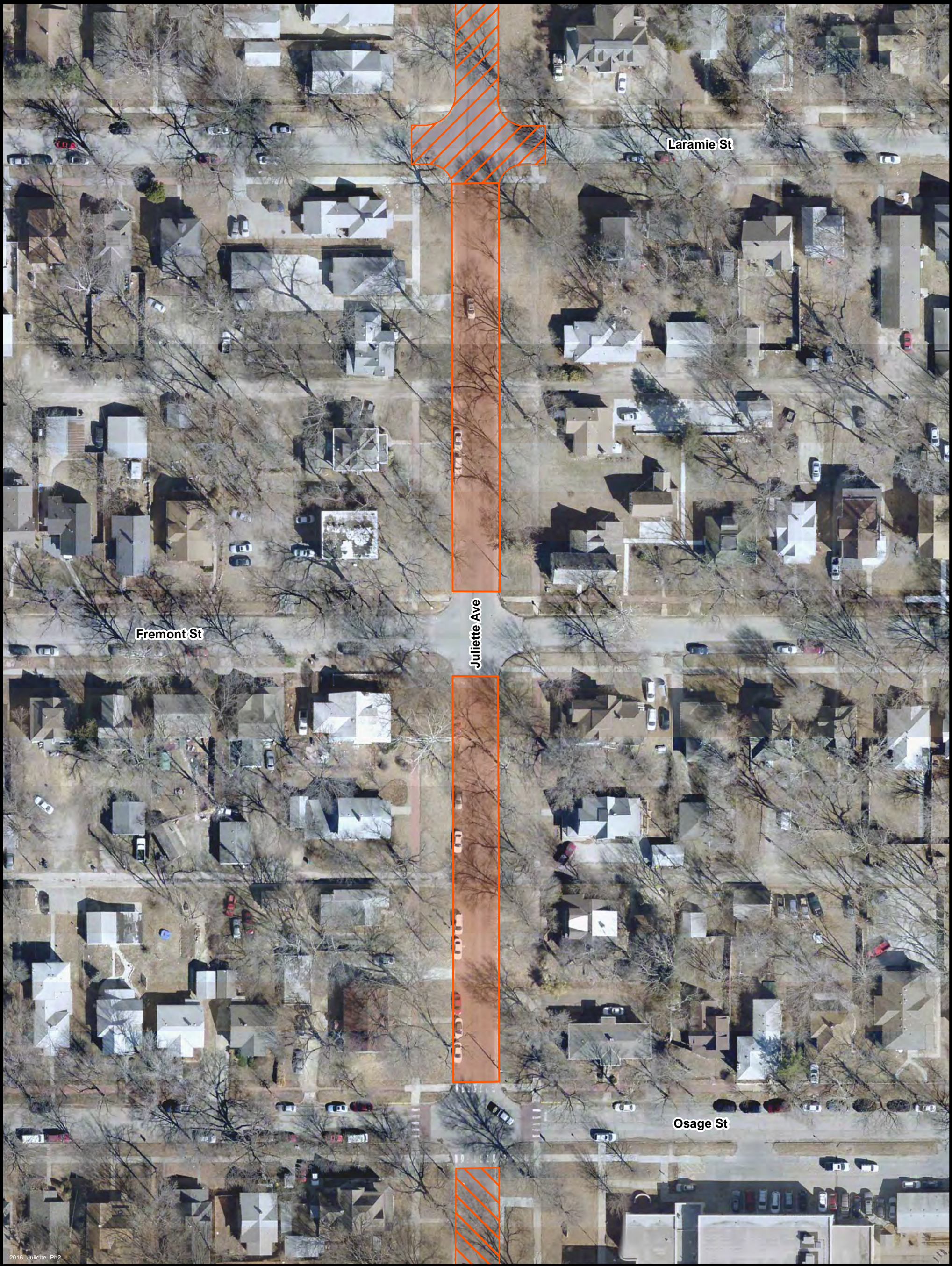


Juliette Ave - Phase II (Laramie St to Osage St)




Total Cost	20%
\$574,182	\$114,836



2016 Juliette_Ph2

Juliette Ave

Remove & store current bricks.
 Construct new subgrade of 6" concrete over rock bed.
 Reinstall salvaged bricks over layer of sand.

-  Phase II
-  Phase I
-  Phase III