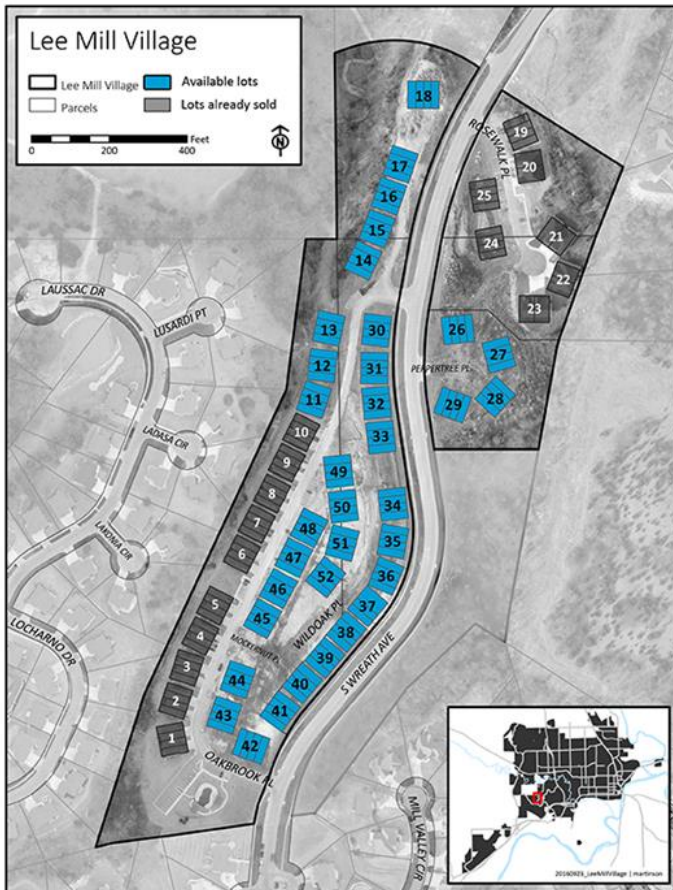


LEE MILL VILLAGE DEVELOPMENT

CONTACTS: City Manager's Office . Jason Hilgers . Deputy City Manager
785.587.2404 . hilgers@cityofmhk.com . City Hall . 1101 Poyntz Avenue
Manhattan, KS 66502 . www.cityofmhk.com



Lot Details



SITE DESCRIPTION

Individual Lot Area	.12 Acres
Maximum Units Allowed	4

ZONING: Residential PUD

Potential Uses	Duplex/Townhome
Within City Limits	Manhattan
Additional Zoning Overlay	Airport Overlay

PROPERTY AND AREA DESCRIPTION

Building Height Restrictions	50'
Max Lot Coverage Allowed	40%

INFRASTRUCTURE

Electrical	Westar Energy
Natural Gas	Kansas Gas Service
Telecommunications	AT&T
Water	City of Manhattan, 8" Main
Sewer	City of Manhattan, 8" Main

TAX INFORMATION

Total Mill Rate for 2018 Taxes	145.011
Annual Lot Specials	\$3,189/Year (Exp. 2028)
Specials Payoff Amount	\$29,899.26
Current Avg. Annual Property Tax	\$314.16 / Lot
	\$1,995.50 / 35 Total Lots

SPECIALS BUY DOWN SAMPLE

Lot Purchase Price	Special Assessments Owed	Amount Owed After Buy Down
\$30,000 - 40,000	\$29,899.26	\$0

ADDITIONAL RESOURCES

[Lee Mill Village Plat](#)
[Lee Mill Village Covenants](#)

[2007 Annex/Rezone City Commission Memo](#)
[Specials Pay Off & Property Tax Summary](#)